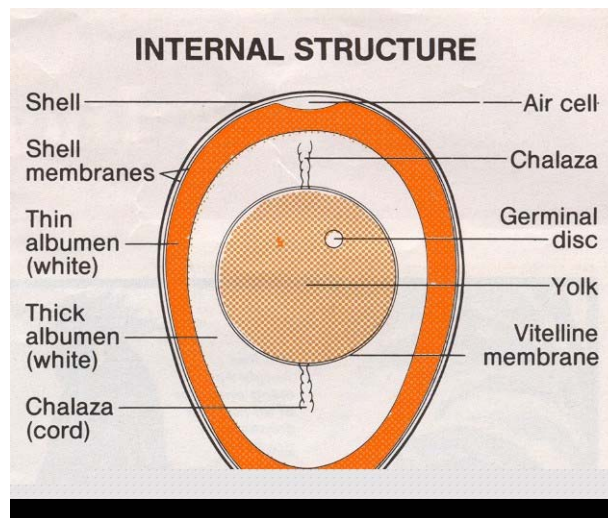


## TEACHER'S NOTES

# EGGS FROM THE INSIDE OUT



The Eggs From the Inside Out worksheet is designed to give the students an understanding of the structure of the egg. This practical activity will allow the students to practice their observation skills. This is necessary for the student to understand how the egg changes as it ages and why eggs must be stored correctly. The students may like to have an egg (broken onto a plate) in front of them when they are completing this activity. Students need to pay close attention to the different egg whites. The answers to the questions can be found on the 'Inside Story On Egg Freshness' fact sheet 4.



Q1 What happens to the air cell as the egg gets older?

A1 As the egg gets older the air cell gets larger.

Q2 How do the yolk and the egg white change as the egg gets older?

A2 The yolk becomes larger and is easily broken. The thick white becomes less gelatinous. (more runny)

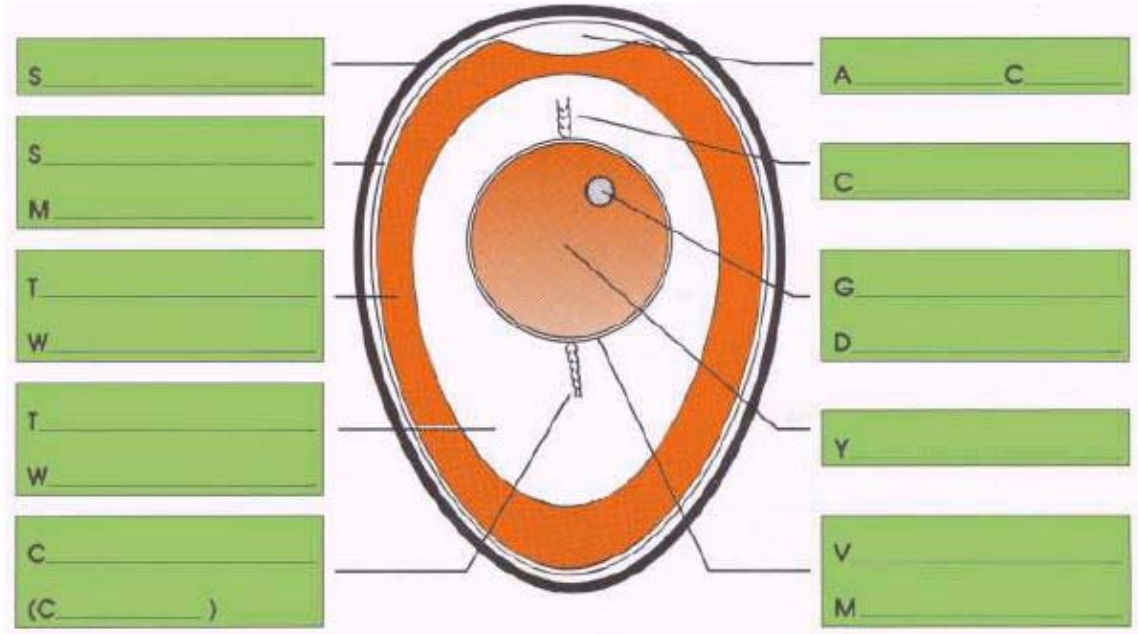
Q3 Which dishes can we use older eggs in?

A3 Custards, omelettes, scrambled eggs, cakes or biscuits.

# EGGS FROM THE INSIDE OUT



NAME:



Q1 What happens to the air cell as the egg gets older?

---

---

---

Q2 How do the yolk and the egg white change as the egg gets older?

---

---

---

Q3 Which dishes can we use older eggs in?

---

---

---